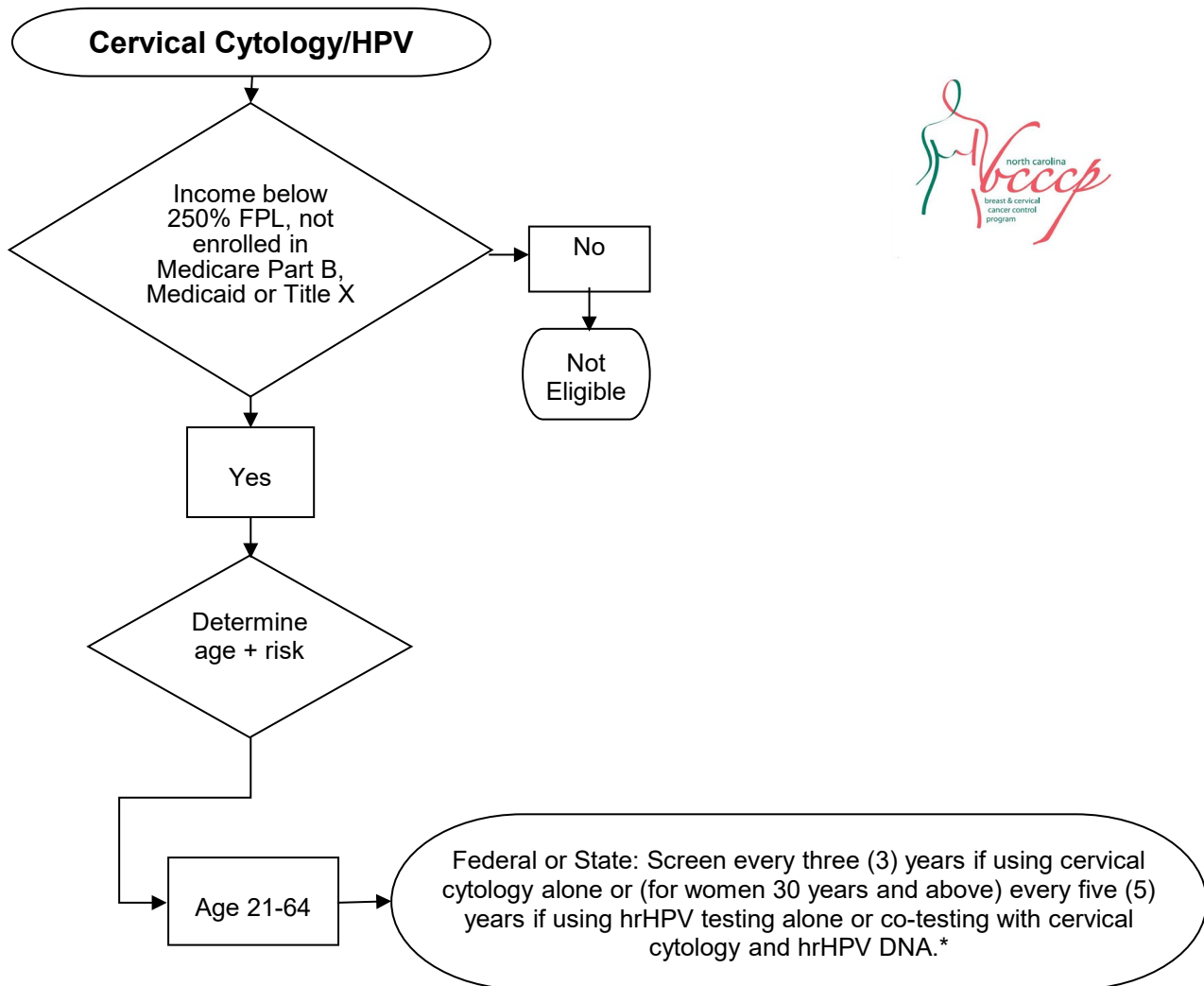


NC BCCCP Eligibility Flow Chart Cervical Screening



Note: The priority population for federally-funded NC BCCCP cervical cancer screening services is women between the ages of 21 and 64 who have low-incomes (up to 250% of federal poverty level), who have never been screened (defined as not having been screened in the last 10 years), and who have no other source of health-care reimbursement, such as insurance. Recruitment efforts should be concentrated on this population.

At least 20% of all newly-enrolled women screened for cervical cancer will have never been screened (defined as not having been screened in the last 10 years).

Women who have had a hysterectomy for CIN disease should undergo cervical cancer screening for 20 years, even if it goes past the age of 65. If a woman over 64 needs to be screened and is eligible to receive Medicare benefits, she should be encouraged to enroll. Women enrolled in Medicare Part B are not eligible for the NC BCCCP clinical services. However, women who are eligible for Medicare Part B but have low incomes (up to 250% of the federal poverty level) and cannot pay the premium to enroll in Medicare part B are eligible to receive services through the NC BCCCP.

*Women determined to be high-risk for cervical cancer should be screened more frequently.